

1D



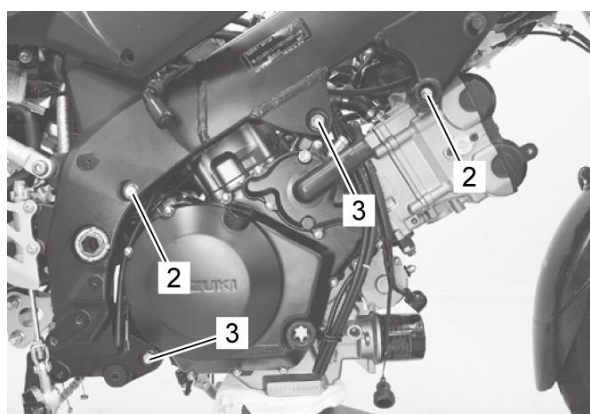
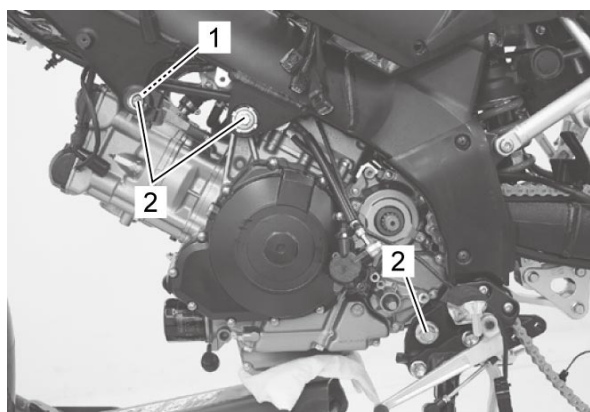
Engine Assembly Installation

Reinstall the engine in the reverse order of engine removal. Pay attention to the following points:

- Mount the engine assembly in the following procedures:
 - a. Fit the collar (1) onto the crankcase as shown.



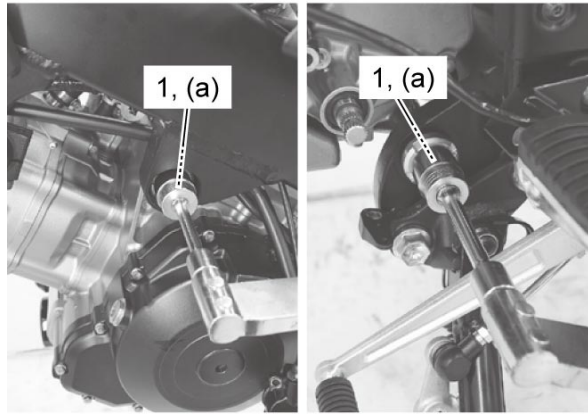
- b. Install the spacer (1).
- c. Temporarily tighten the engine mounting bolts (2) and new nuts (3).



- d. Tighten the engine mounting thrust adjusters (1) to the specified torque.

Tightening torque

Engine mounting thrust adjuster (a): 12 N·m (1.2 kgf-m, 9.0 lbf-ft)



- e. Tighten the engine mounting thrust adjuster lock-nuts (1) to the specified torque with the special tools.

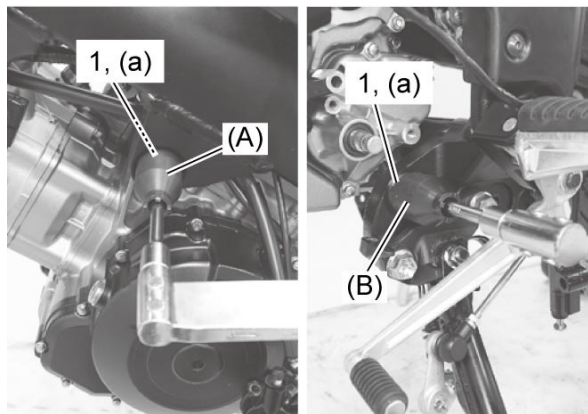
Special Tool

(A): 09940-14990

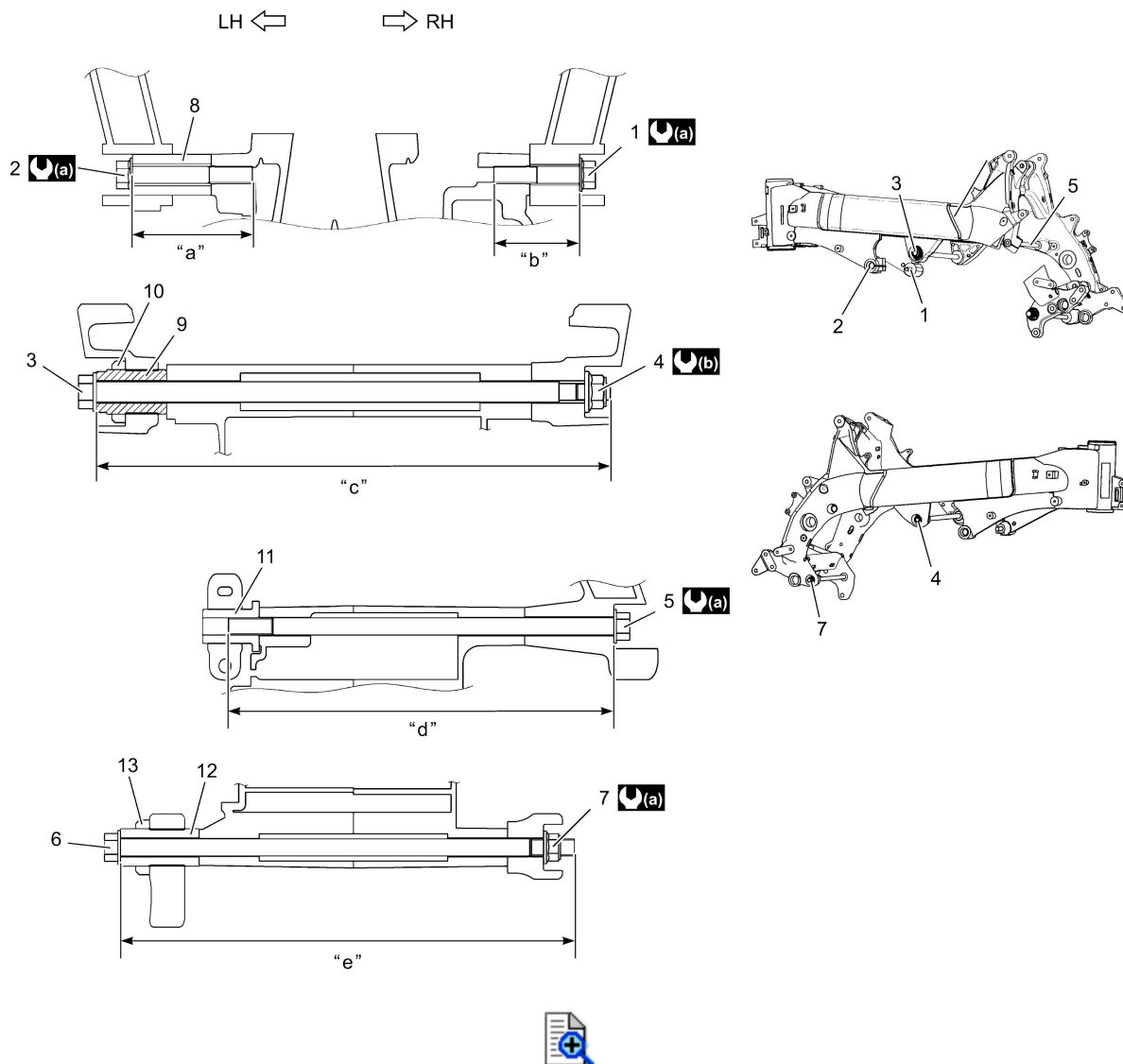
(B): 09940-14980

Tightening torque

Engine mounting thrust adjuster lock-nut (a): 45 N·m (4.5 kgf-m, 32.5 lbf-ft)



- f. Tighten the engine mounting bolts and nuts to the specified torque in order of (1) → (2) → (5) → (4) → (7).

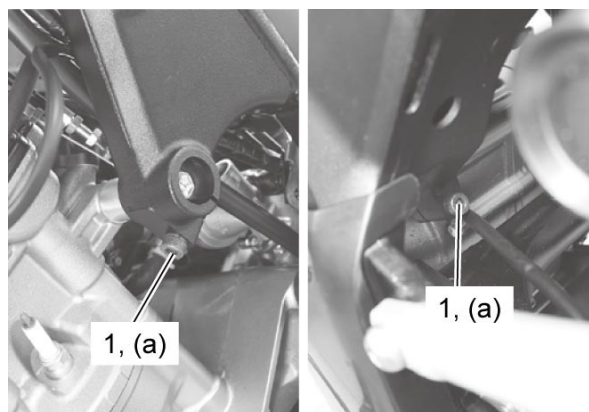


1.	Engine mounting bolt (Front upper, Right)	8.	Spacer	"b":	50 mm (2.0 in)
2.	Engine mounting bolt (Front upper, Left)	9.	Engine mounting thrust adjuster (Center)	"c":	300 mm (11.8 in)
3.	Engine mounting bolt (Center upper)	10.	Engine mounting thrust adjuster lock-nut (Center)	"d":	225 mm (8.9 in)
4.	Engine mounting nut (Center upper)	11.	Collar	"e":	265 mm (10.4 in)
5.	Engine mounting bolt (Rear upper)	12.	Engine mounting thrust adjuster (Lower)	(a):	55 N·m (5.5 kgf-m, 40.0 lbf-ft)
6.	Engine mounting bolt (Rear lower)	13.	Engine mounting thrust adjuster lock-nut (Lower)	(b):	93 N·m (9.3 kgf-m, 67.5 lbf-ft)
7.	Engine mounting nut (Rear lower)	"a":	70 mm (2.8 in)		

g. Tighten the pinch bolts (1) to the specified torque.

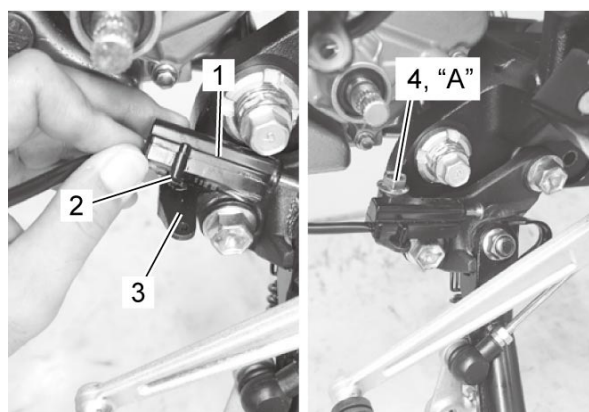
Tightening torque

Engine mounting pinch bolt (a): 23 N·m (2.3 kgf-m, 17.0 lbf-ft)



- When installing the side-stand switch (1), insert the projection (2) of side-stand switch (1) into the hole (3) of side-stand bracket.
- Apply thread lock to the side-stand bolt (4) and tighten it.

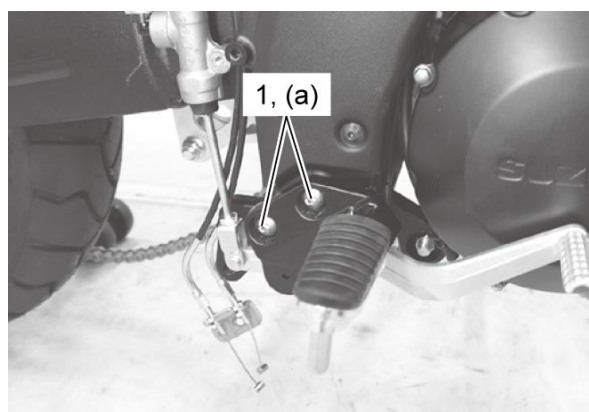
"A": Thread lock cement 99000-32150 (THREAD LOCK CEMENT 1322D)



- Tighten the front footrest bracket bolts (1) to the specified torque.

Tightening torque

Front footrest bracket bolt (a): 26 N·m (2.6 kgf-m, 19.0 lbf-ft)





- Adjust the drive chain slack.
- Check the gearshift lever height.
- Check the radiator hose routing.
- Check the wiring harness routing.
- After finishing the engine installation, check the following items.
 - Throttle cable play:
 - Throttle valve synchronization:
 - Engine oil leakage:
 - Engine coolant leakage: